



Via Mario Villa 210
20099 Sesto San Giovanni (MI), Italy
Tel. +39 02 24 10 50 01
www.ge.com

ANNEX TO IS 2638 GB

Page 1 of 13

Assembling Instruction for remote Measuring Tap Type Oil-Oil Application According: RX001433-01



Author: Stefan Gisy
Approved: Maurizio Campana
In use since: 1.4.2012
Registration Nr: 18042012E
Index: B
February 2018



Via Mario Villa 210
20099 Sesto San Giovanni (MI), Italy
Tel. +39 02 24 10 50 01
www.ge.com

ANNEX TO IS 2638 GB

Page 2 of 13

List of Contents

Subject	3
General notes	4
Preparation	5
Part & Tool List	6
Assembling	7 - 12
Appendix RX001433-01	13



Via Mario Villa 210
20099 Sesto San Giovanni (MI), Italy
Tel. +39 02 24 10 50 01
www.ge.com

ANNEX TO IS 2638 GB

Page 3 of 13

Subject:

This instruction is for remote Measuring Tap 1,5 kV

according to drawing RX001433-01

For further understanding of the construction it is necessary to study the drawing RX001433-01

Aim:

The instruction is to make sure that the reader is able to assemble the remote measuring Tap with numbers given in the Subject.

Content:

Follow the instruction manual in chronological order. It is illustrated with pictures and described with words. The necessary tools, means and parts are mentioned or described.

Publisher and Creator:

GRID SOLUTIONS S.p.A.



Via Mario Villa 210
20099 Sesto San Giovanni (MI), Italy
Tel. +39 02 24 10 50 01
www.ge.com

ANNEX TO IS 2638 GB

Page 4 of 13

General notes:

1. Worker has to perform all works strictly according to this instruction.
2. The worker has to have an orderly and tidy kind method of working.
3. Tools have to be in clean and orderly condition as the function it demands.
4. Means and parts have to be ready in the required number and size.
5. All the parts have to be kept in near of the place where they are needed.

Note: Grid Solutions takes over guarantee for the function of the bushing in the sense of product liability. For the work at the remote measuring Tap as described in this instruction Grid Solutions does not take any warranty in cases of incorrect treatment of the measuring Tap.



Via Mario Villa 210
20099 Sesto San Giovanni (MI), Italy
Tel. +39 02 24 10 50 01
www.ge.com

ANNEX TO IS 2638 GB

Page 5 of 13

1. Preparation

- 1. Prior to start please read this assembly manual carefully.**
- 2. Organize the necessary working tools**
- 3. Make sure that all parts are available acc. Packing list or Assembling drawing RX001400-01**
- 4. All parts should be cleaned with thinner and a clean cloth.**



Via Mario Villa 210
20099 Sesto San Giovanni (MI), Italy
Tel. +39 02 24 10 50 01
www.ge.com

ANNEX TO IS 2638 GB

Page 6 of 13

2. Part & Tool List

Parts

RX000172-01 remote Tap

RX001437-01 Cu-cable covered with Teflon, length as requested

RX001436-01 Connector

Tool list

Plug

Soldering Iron

Soldering tin

Measuring length device



Via Mario Villa 210
20099 Sesto San Giovanni (MI), Italy
Tel. +39 02 24 10 50 01
www.ge.com

ANNEX TO IS 2638 GB

Page 7 of 13



Step 1:

Make sure that the connector RX001436-01 is connected tight to the bushing and to the measuring Tap. There is no torque foreseen, hand tight is o.k. for the blue connection

Note: make sure that there is no drall / torque in the cable to the remote measuring tap.

Picture 1

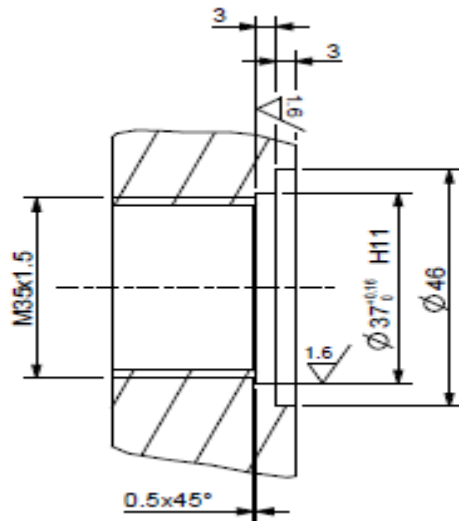
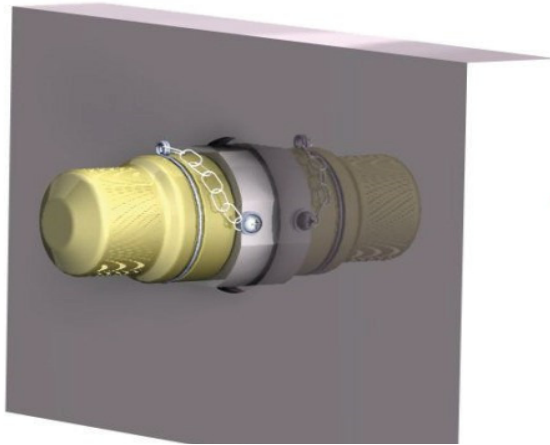


Step 2:

Make that the insulation is removed properly by using of a plug the last **20 mm** of the white insulation. Make sure that the overall length has been accurately measured before.

Note: make sure that by removing the insulation, the cable will not be damaged.

Picture 2 & 3



External machining at transformer outer wall

Step 3:

The external device RX000172-01 must be screwed tight in the foreseen machining at the external transformer wall. The yellow plug must be removed for all further activities. Make sure that the torque to mount the remote measuring Tap is **not exceeding 50 Nm.**

Note: make sure that the machining is free of metal parts and the O-ring system has not been damaged by plug-in.

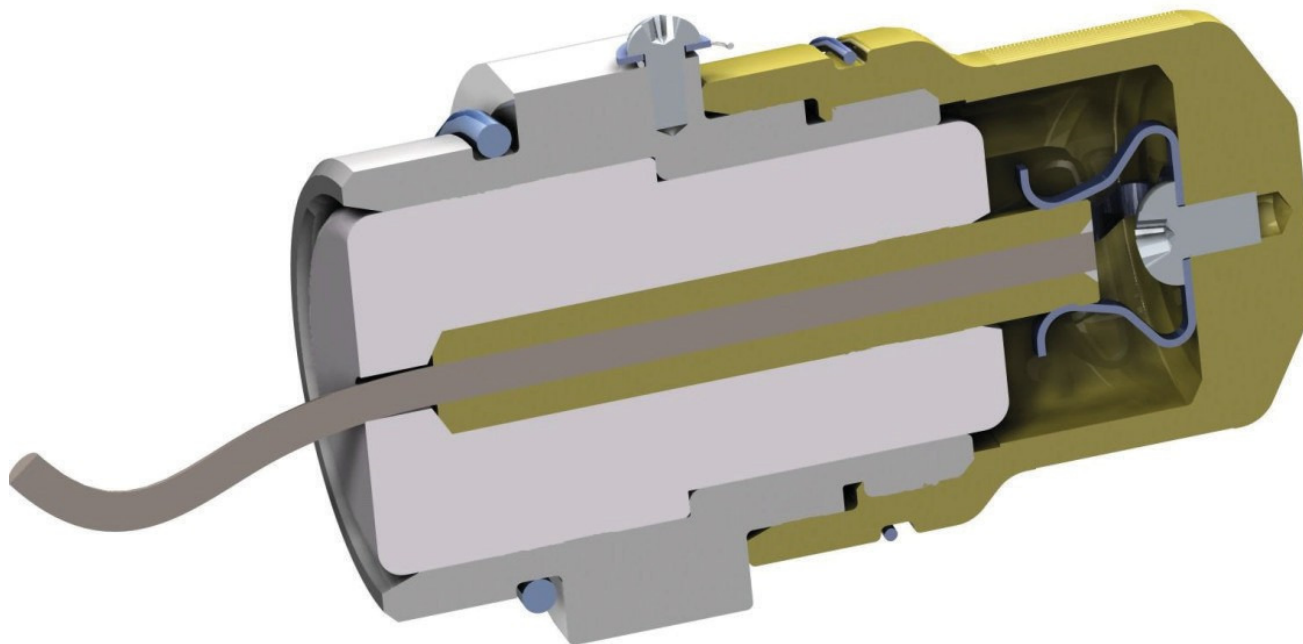
Picture 4 & 5



Via Mario Villa 210
20099 Sesto San Giovanni (MI), Italy
Tel. +39 02 24 10 50 01
www.ge.com

ANNEX TO IS 2638 GB

Page 10 of 13

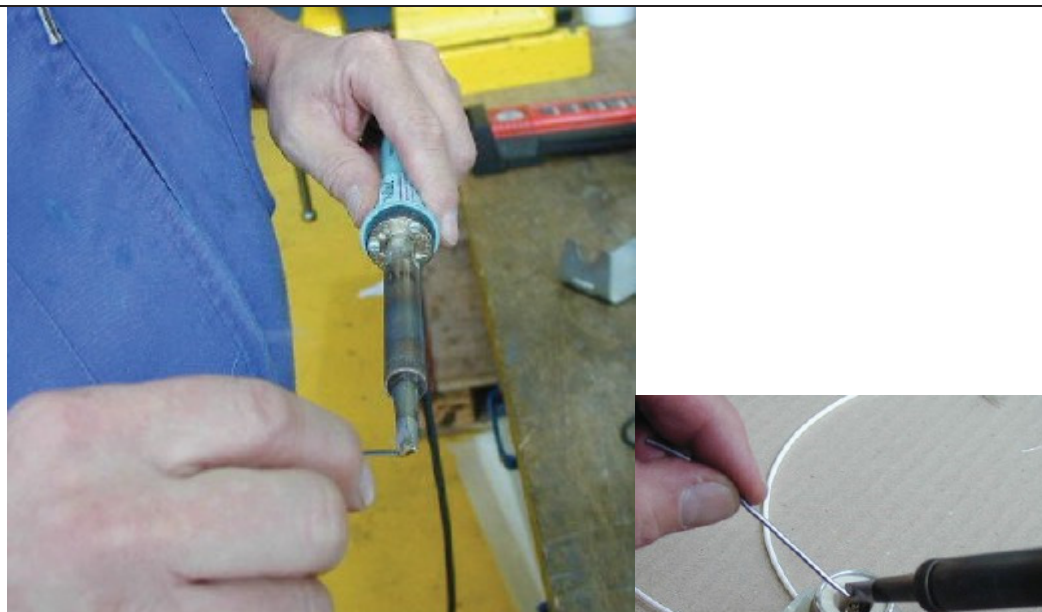


Step 4:

With removed yellow cap move the cu-cable through the pin until the blank copper is on the same level than the pin. **Make sure that there is no tension in the cable.**

Note: make sure that the extended blank copper is in good shape, if not, cut a piece until the cross section gets accurate again.

Picture 6 & 7

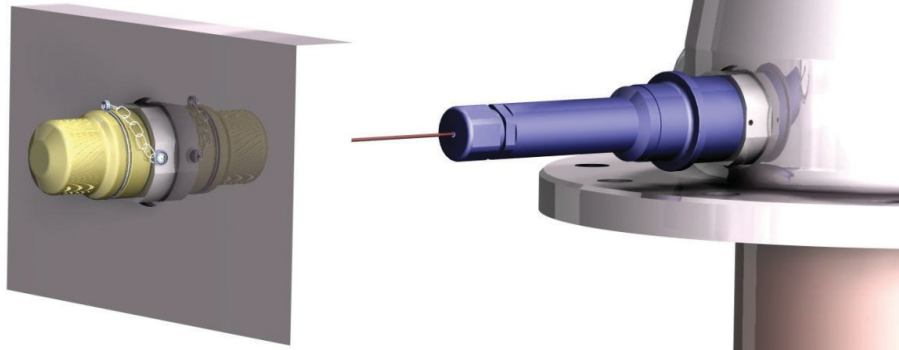


Step 5:

Use a soldering iron. Make sure that the iron has the right temperature. Weld the blank cu- cable tight in the pin, as it is described in RX001433-01. Make sure **that the inner plastic insulation will not get damaged**. Remove sharp edges if necessary with a glass paper after soldering.

Note: the soldering must be oil tight, otherwise there will occur a leakage. Make sure that the Cap is closed after finishing the work and the earthing spring fits accurately.

Picture 8 & 9



Step 6:

Correct mounted device RX000172-01

Note: make sure that there is no tension on the connection cable. There must be foreseen enough tolerance to compensate different temperature elongations.

Picture 10



Local Drawing Number
81903000500

Machining for assembling of the measuring tap
- Lavorazione per assemblaggio presa di misurazione

Part Number
81903000500

Measuring tap for oil application / Presa di misurazione per applicazioni in olio

- Con sistema automatico di messa a terra
- Per applicazioni in olio
- Campo di temperatura da -30° fino a 105°C
- Tensione nominale max. 1.5kV
- Tensione di prova 1min/50Hz 3kV

Package:

- Measuring tap 1.5kV
- Insulated connector
- Cover

* 210 = fixed length for internal connection to sockets

Machining for assembling of the measuring tap
- Lavorazione per assemblaggio presa di misurazione

Part Number
81903000500

Measuring tap on the bushing
Presa di misurazione nell'isolatore passante

Assembling of the outer measuring tap (transformer housing)
Assemblaggio esterno della presa di misurazione (sede sul trasformatore)

Part Number
81903000500

After assembling

- check contact of the grounding spring with the pin
- screw the cap tight on the houses of measuring tap

Dopo il montaggio

- Controllare il contatto della molla di messa a terra con il perno
- Avvitare il tappo stretto sulla sede della presa di misurazione

Part Number
81903000500

POWER FACTOR TAP ASSEMBLY EXTENSION

EXTERNAL P.F. TAP

Part Number
81903000500

General Data

General ID: 2766-m K

Item: **EXTERNAL P.F. TAP**

Stock: 07/100

Quality Level: 3

Design Authority: RPY

Local UVE: RPY

EXTERNAL P.F. TAP

Other Description: **EXTERNAL P.F. TAP**

Raw Material: None

Thermal Treatment: None

Surface Treatment: None

Description: **POWER FACTOR TAP ASSEMBLY EXTENSION**

Created: 27/02/08

Revised: 28/02/08

Approved: 28/02/08

EC number: 700000070

Weight (kg): 2.260

Material: **MACHINED WHITE P.O.**

Weight (kg): 2.260

Material: **MACHINED WHITE P.O.**

Part Number
81903000500

Grid Solutions

ASSEMBLY EXTENSION

Part Number: **RX001433-01**

Revision: **03**

Part Number
81903000500

Assembling_Instruction_remote_FF

Printdate: 20.02.2018